

MK Laser Marking System

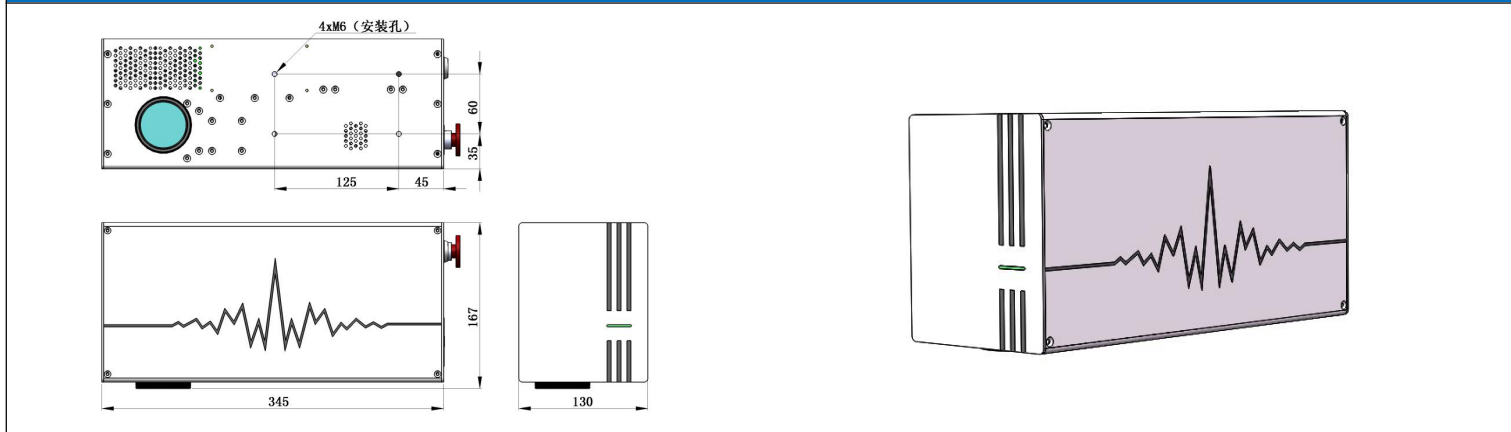
High Power Laser Marking System For Family And Factory



Features:	Material:
<ul style="list-style-type: none"> - Best price / performance ratio - Easy assembly, simple structure - Small volume, portable and mobile - Air cooled with ultra-compact design 	<ul style="list-style-type: none"> - Metal (gold, silver, copper, Iron, aluminum, titanium, zinc, steel...) - Plastic (PC、PVC、PE、HDPE、ABS、PPR、PET、HIPS、PS、PP、PPO、PA、POM、PMMA...) - Others (Oil paint surface, coating surface, plastic film, package...)

Specifications				
Wavelength	1064nm		532nm	355nm
Peak power	30 kW	50 kW	20 kW	10 kW
Focus length	~160 mm			
Marking scope	110 mm x 110 mm			
Marking depth	≤0.2 mm			
Maximum marking line speed	7000 mm/s			
Minimum marking line width	≤0.1 mm			
Power consumption	≤0.2 kW			
Power requirement	110 /220VAC			
Weight	~6KG			
Size	345X130X167mm			

Dimensions



Marking Samples

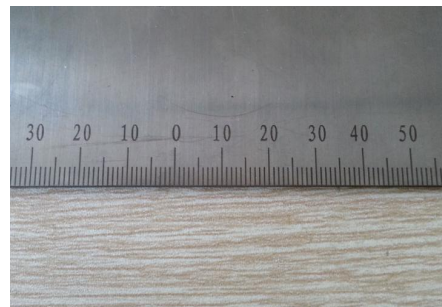
Jewelry (gold, silver)



Kitchen&bath (stainless steel)



Scaleplate (copper, Iron, aluminum)



Metal shell (black aluminum, steel)



Plastic (PC、PVC、PE、HDPE、ABS、PPR、PET、HIPS、PS、PP、PPO、PA、POM)

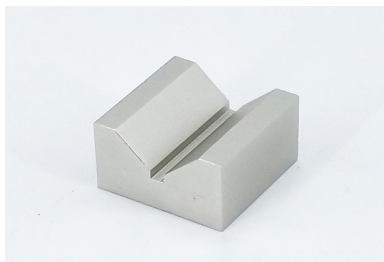


Components (optional)

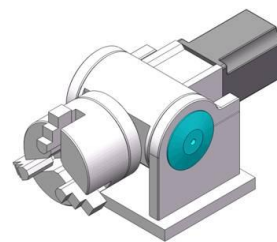
L-type Fixture



U-type Fixture



Rotary fixture



Laser Goggles



Metal Card



Lead screw

