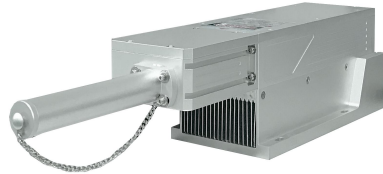


MPL-N-266/0.1~10uJ/1~120mW



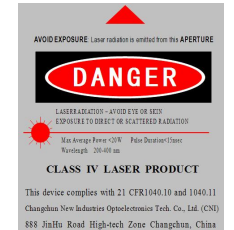
LD PUMPED ALL-SOLID-STATE
UV LASER

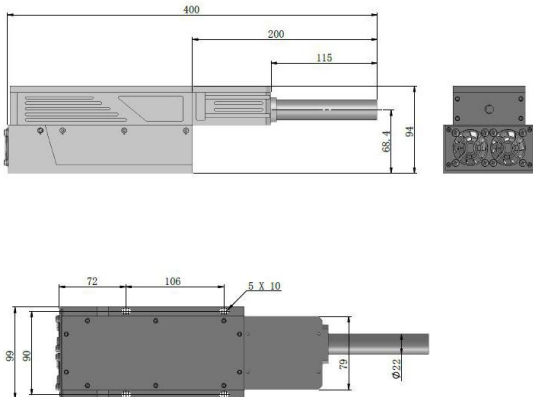

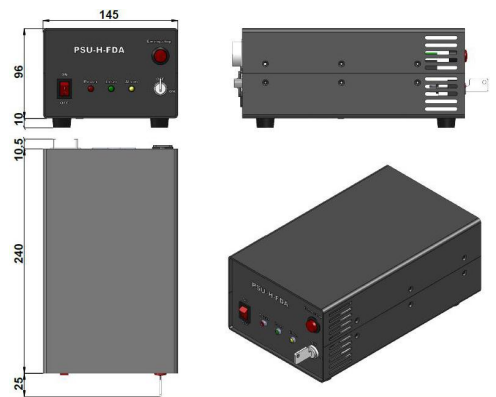
All solid state 266 nm UV laser is made features of ultra compact, long lifetime, cost-effectiveness and easy operating, which is widely used in UV curing, micro-electronics, CD carving, laser medical treatment, scientific experiment, etc.



SPECIFICATIONS

Central wavelength (nm)	266±1	
Output average power (mW)	1~30	30~120
Transverse mode	Near TEM ₀₀ , elliptical	
Operating mode	Pulsed, Cr : YAG passively Q-switched	
Single pulse energy (μJ)	0.1~3	~10
Pulse duration (ns)	~1.3	~6
Peak power (W)	80~2300	~1700
Rep. rate (kHz)	FIXED	Setting up one fixed rep. rate internal between 3kHz-5kHz with stable pulse energy, pulse duration and pulse period.
	EXT TRIG	3kHz-5kHz by external trigger with stable pulse energy, pulse duration and pulse period.
	QCW	QCW state with one rep. rate between 10kHz-15kHz.
Average power (mW)	Average power (mW) = Single pulse energy (μJ) * Rep. rate (kHz)	
Ave power stability	<3%, <5%	
Beam parameters	Elliptical (4:1), Beam spot 0.5*2mm	
Warm-up time (minutes)	<10	
Beam height from base plate (mm)	70	
Operating temperature (°C)	10~35	
Power supply (90-264VAC)	PSU-N-LED/PSU-N-FDA	
Cooling system	Air	
Expected lifetime (hours)	5000	
Warranty period	1 year	
Remarks	Please Note: because of the Walk-off effect of Nonlinear crystals, the beam quality of UV laser is not so good as that of 1064/532nm laser.	



MPL-N-266	PSU-N-LED	PSU-N-FDA
 <p>400 (L) × 99 (W) × 94 (H) mm³, 3.5 kg</p>	 <p>275.5 (L) × 145 (W) × 106 (H) mm³, 2.5 kg</p>	 <p>275.5 (L) × 145 (W) × 106 (H) mm³, 2.5 kg</p>