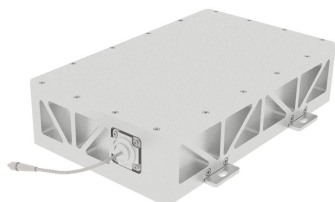


RGB-xx



RGB-xx Laser System

RGB-xx series laser system can combine 2 wavelengths into a system and one fiber outputs. It can control the laser output either separately, or open multiple lasers at the same time.



SPECIFICATIONS

Wavelength combination (nm)	488/532	488/561	488/671	532/640	532/785
Wavelength (nm)	±5/±1	±5/±1	±5/±1	±1/±5	±1/±5
Operating mode	CW				
Output power after fiber (mW)	20/50	20/20	20/30	50/50	50/30
Power stability (rms, over 4 hours)	<3%, <2%, <1%	<3%, <2%, <1%	<5%, <3%, <2%	<3%, <2%, <1%	<3%, <2%, <1%
Transverse mode	TEM ₀₀ (single mode fiber output)				
Noise of amplitude (rms, 20Hz~20MHz)	<1%				
M ² factor after fiber	<1.1				
Polarization ratio	Random (>30:1 after PM fiber optional)				
Fiber type	SM fiber (PM fiber optional)				
Fiber Core Diameter(μm)	4-9				
Fiber NA	0.10-0.15				
Fiber Connector	FC/APC				
Fiber Length (m)	1 (Other lengths are available on request)				
Fiber jacket	PVC or metal jacket				
Warm-up time (minutes)	<5				
Operating temperature (°C)	10~35				
Power supply (100-240VAC)	RGB-31				
Modulation optional	TTL on/off, 1Hz-1kHz, 1kHz-10kHz, 10kHz-30kHz; and Analog modulation optional				
Expected lifetime (hours)	10000				
Warranty	1 year				



SPECIFICATIONS

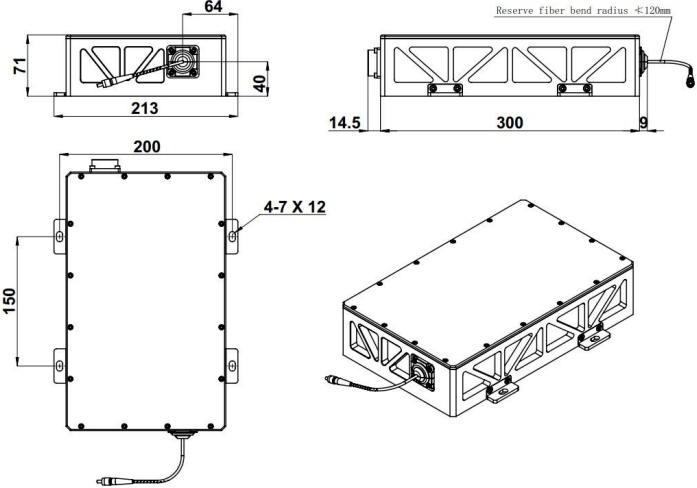
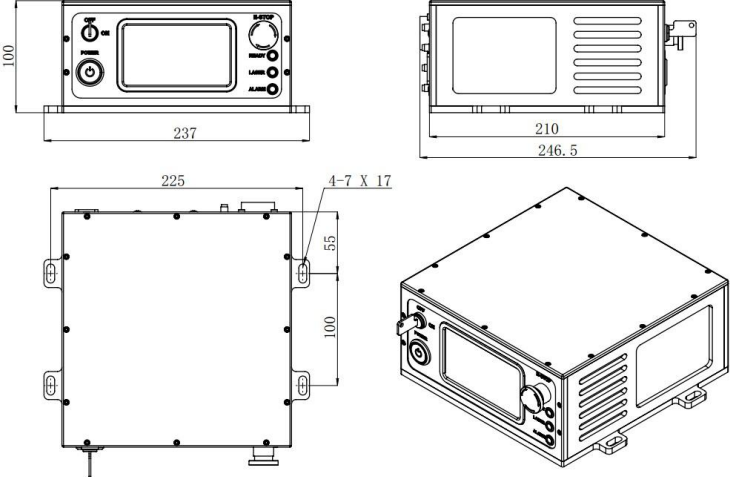
Wavelength combination (nm)	532/1064	561/640	561/785	640/1064	640/1053
Wavelength (nm)	±1/±5	±1/±5	±1/±5	±5/±1	±5/±1
Operating mode	CW				
Output power after fiber (mW)	100/200	20/50	20/30	50/1000	50/200
Power stability (rms, over 4 hours)	<3%, <2%, <1%				
Transverse mode	TEM ₀₀ (single mode fiber output)				
Noise of amplitude (rms, 20Hz~20MHz)	<1%				
M ² factor after fiber	<1.1				
Polarization ratio	Random (>30:1 after PM fiber optional)				
Fiber type	SM fiber (PM fiber optional)				
Fiber Core Diameter(μm)	4-9				
Fiber NA	0.10-0.15				
Fiber Connector	FC/APC				
Fiber Length (m)	1 (Other lengths are available on request)				
Fiber jacket	PVC or metal jacket				
Warm-up time (minutes)	<5				
Operating temperature (°C)	10~35				
Power supply (100-240VAC)	RGB-31				
Modulation optional	TTL on/off, 1Hz-1kHz, 1kHz-10kHz, 10kHz-30kHz; and Analog modulation optional				
Expected lifetime (hours)	10000				
Warranty	1 year				



SPECIFICATIONS

Wavelength combination (nm)	671/785	1053/1064
Wavelength (nm)	±1/±5	±1/±5
Operating mode	CW	
Output power after fiber (mW)	30/30	200/200
Power stability (rms, over 4 hours)	<5%, <3%, <2%	<3%, <2%, <1%
Transverse mode	TEM ₀₀ (single mode fiber output)	
Noise of amplitude (rms, 20Hz~20MHz)	<1%	
M ² factor after fiber	<1.1	
Polarization ratio	Random (>30:1 after PM fiber optional)	
Fiber type	SM fiber (PM fiber optional)	
Fiber Core Diameter (μm)	4-9	
Fiber NA	0.10-0.15	
Fiber Connector	FC/APC	
Fiber Length (m)	1 (Other lengths are available on request)	
Fiber jacket	PVC or metal jacket	
Warm-up time (minutes)	<5	
Operating temperature (°C)	10~35	
Power supply (100-240VAC)	RGB-31	
Modulation optional	TTL on/off, 1Hz-1kHz, 1kHz-10kHz, 10kHz-30kHz; and Analog modulation optional	
Expected lifetime (hours)	10000	
Warranty	1 year	

Remark: Please consult CNI for customized configurations and modifications available.

RGB-xx	RGB-31
 <p>Reserve fiber bend radius $\leq 120\text{mm}$</p> <p>323.5(L)×213(W)×71(H) mm³, 6.0kg</p>	 <p>246.5 (L)×237(W)×100 (H) mm³, 5.0kg</p>