

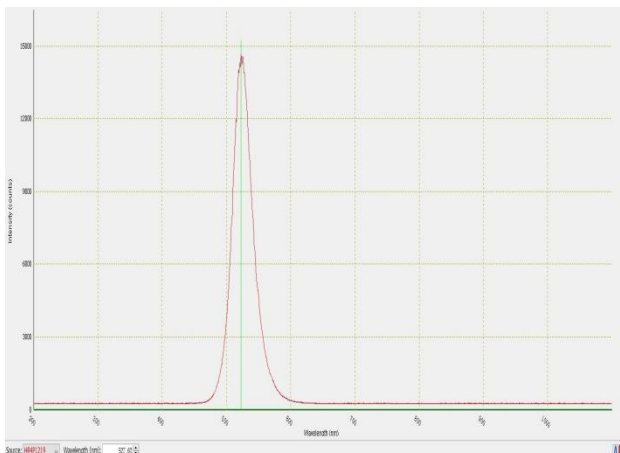


Performance Advantages:

- ◆ High brightness, high efficiency
- ◆ Precise adjustment of brightness
- ◆ Support TTL control output
- ◆ Customizable

| | |
|------------------------------|--|
| Product Model | SLE-I |
| Channel | 1 |
| Wavelength | 527nm |
| Power | 400mW |
| Control Mode | 0~100% dimming, accuracy of 1% |
| ON/OFF Response Times | Rising/ Descending Edge (10%~90%) < 50us |
| Operating Mode | Continuous Output, Default TTL Modulation (Analog Modulation Optional) |
| Control Mode | Support RS232 host computer control |
| Control Options | SMA - External trigger TTL signal (external trigger analog modulation optional) Serial Interface (RS232) - Light Output ON/OFF and brightness adjusting Manual control box (optional) - Light Output ON/OFF and brightness adjusting |
| Optical Transmission | 3mm diameter liquid optical waveguide (LLG) |
| Operating Temperature | 10~35°C |
| Power Input | DC12V |
| Cooled Method | Air Cooled |
| Size | 171mmx114mmx100mm (参考) |
| Warranty | 2 Years |

Spectrogram:



Dimensions:

