

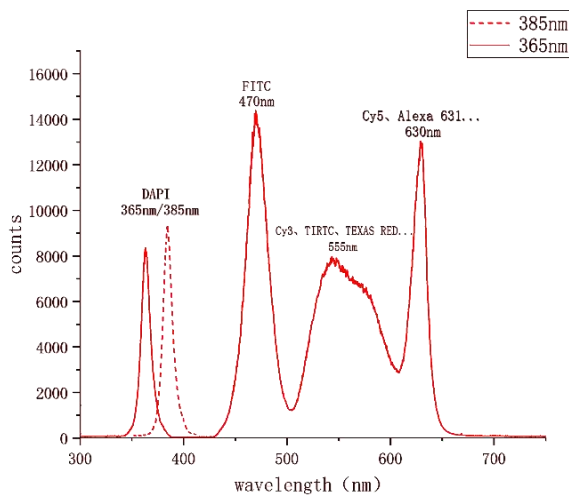


Features :

- ◆ Multi-channel independent control output
- ◆ High brightness, high efficiency
- ◆ Precise adjustment of brightness
- ◆ Support TTL control output
- ◆ Customizable

Model	SLE-IV
Channel	4
Wavelength range	360-660nm
LED Peaks	365nm/470nm/555nm/630nm
Output Power	400~600mW@365nm/470nm 600~1000mW@555nm/630nm (Output power per source channel is dependent on filter bandpass and light guide diameter)
Control Mode	Four independent controls, 0~100% dimming, accuracy of 1%
ON/OFF Response Times	Rising/ Descending Edge (10%~90%) < 50us
Operating Mode	Continuous Output, Default TTL Modulation (Analog Modulation Optional)
Control Mode	Support RS232 host computer control
Control Options	SMA - External trigger TTL signal (external trigger analog modulation optional) Serial Interface (RS232) - Light Output ON/OFF and brightness adjusting Manual control box (optional) - Light Output ON/OFF and brightness adjusting
Optical Transmission	3mm diameter liquid optical waveguide (LLG)
Operating Temperature	10~35°C
Power Input	DC12V-15A
Cooled Method	Air Cooled
Size	264mm×129mm×199mm (Reference)
Warranty	2 Years

Spectrogram:



Dimensions:

