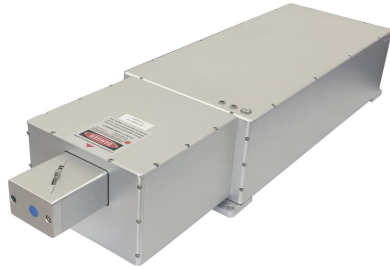


AO-266W 500mW~2000mW



**LD PUMPED ALL-SOLID-STATE
ACOUSTO-OPTIC Q-SWITCHED
LASER**

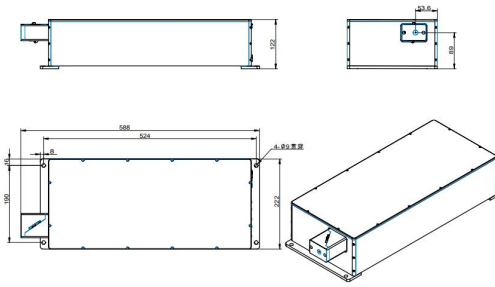
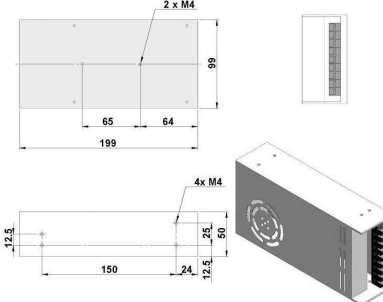
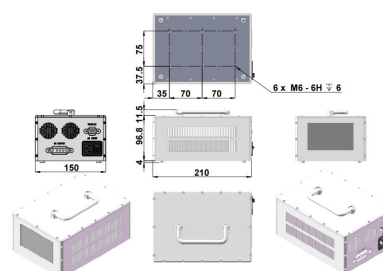

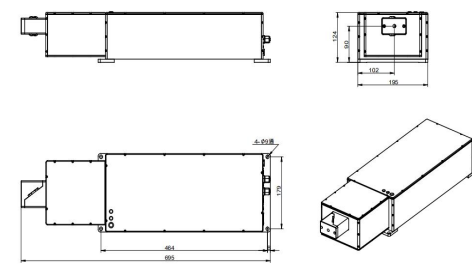
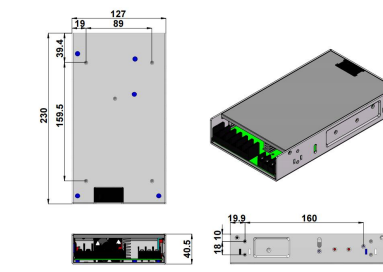
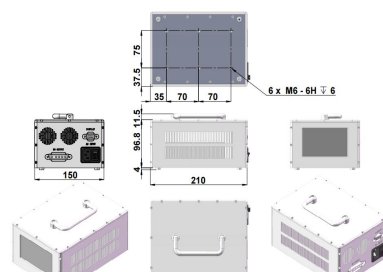

All solid state AOM Q-switched laser at 266 nm has the features of high peak power, high repetition rate, and short pulse duration, which is widely used in marking, carving, measurement, research etc.



SPECIFICATIONS

| | | |
|--|--|--------------------|
| Wavelength (nm) | 266±1 | |
| Operating mode | Acousto-Optic Q-switched | |
| Average power (mW) | 500mW@50KHz | 500mW~2000mW@80KHz |
| | Average power (W) = Single pulse energy (mJ) * Rep. rate (kHz) | |
| Single pulse energy (μJ) | >10μJ@50kHz | >15μJ@80kHz |
| Rep. rate (kHz) | 50-200 | 80-200 |
| Pulse width (ns) | <15 @50kHz | <15 @80kHz |
| Ave power stability (over 4 hours) | <5%, <3%, <2%, <1% | |
| Transverse mode | TEM00 | |
| Beam Circularity (%) | >85 | |
| M2 factor | <1.2 | |
| Beam divergence, full angle (mrad) | <1.5 | |
| Beam diameter at the aperture (1/e2, mm) | ~1.0 | |
| Polarization ratio | >100:1, Horizontal | |
| Beam height from base plate (mm) | 89 | 90 |
| | | |
| Warm-up time (minutes) | <10 | |
| Cooled method | Water Cooled | |
| Operating temperature (°C) | 10~35 | |



| | | | |
|--|---|---|---|
| <p>AO-266W 500mW <i>Integrated electronics</i></p> | <p>PSU-24^① (Power supply 100-240VAC)</p> | <p>PSU-24-P^② (Power supply 100-240VAC)</p> | <p>Water Chiller (WCH-580)</p> |
|  <p>588 (L) × 222 (W) × 122 (H) mm³</p> |  <p>DC24V 13A; 199 (L) × 99 (W) × 50 (H) mm³, 0.9 kg</p> |  <p>210 (L) × 150 (W) × 112.3 (H) mm³, 2.75 kg</p> |  <p>369.8 (L) × 258.4 (W) × 240.6 (H) mm³, 10.5 kg</p> |
| <p>AO-266W 1000mW-2000mW <i>Integrated electronics</i></p> | <p>PSU-30^① (Power supply 100-240VAC)</p> | <p>PSU-36-P^② (Power supply 100-240VAC)</p> | <p>Water Chiller (WCH-580)</p> |
|  <p>695 (L) × 195 (W) × 124 (H) mm³, 21.15 kg</p> |  <p>DC30V 18.6A; 230 (L) × 127 (W) × 40.5 (H) mm³, 1 kg</p> |  <p>210 (L) × 150 (W) × 112.3 (H) mm³, 2.75 kg</p> |  <p>369.8 (L) × 258.4 (W) × 240.6 (H) mm³, 10.5 kg</p> |

Note:

- ① Adaptor for 24V/13A or 30V/18.6A.
- ② Adaptor for 24V/13A or 30V/18.6A, and power control function is included.