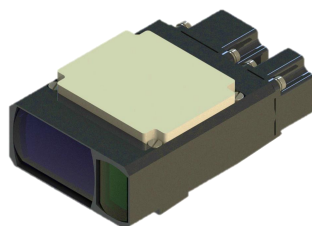




## Micro Laser Rangefinder Series A: DYA-00(A/B)

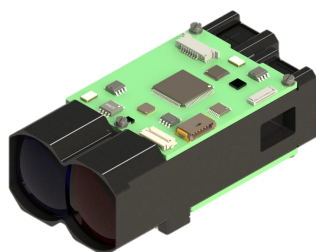


DYA-00 is highly compact, easy to assemble and use. DYA-00A uses the 905nm laser from semiconductor laser diode as operating photosource while DYA-00B uses the 1550nm laser as operating photosource. It has a long lifetime with low power consumption.

### Specifications:

Items	A-00A Technical parameters	A-00B Technical parameters	Descriptions
Operating wavelength	905nm	1550nm	
Range	5m~1800m	30m~3000m	See Note
Precision	±0.5m	±2m	Depend on Range
Frequency	1~10Hz	1~5Hz	
Accuracy rate	≥98%	≥98%	
Divergence angle	1.0mrad	1.2mrad	
Aperture diameter	24mm	21mm	
Communication interface	UART	UART	Optional: RS232/RS422
Input voltage	3.3V DC	3.3V DC	
Power consumption	≤0.3W	≤3W	
Standby power	≤0.15W	≤0.5W	
Size	50mmx50mmx26mm	60mmx45mmx25mm	Subject to product manuals
Weight, all components	≤50g	≤65g	Subject to product manuals
Heat dissipation method	Natural heat dissipation		

## DYA-01(C)

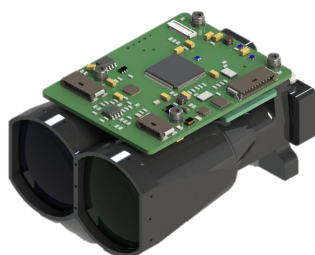


DYA-01(C) is highly compact, eye safe, easy to assemble and use. It uses the 1550nm laser from semiconductor laser diode as operating photosource. It has a long lifetime with low power consumption.

## Specifications:

Items	Technical parameters	Descriptions
Operating wavelength	1550nm	
Range	30m~4000m	See Note
Precision	±2m	Depend on Range
Frequency	1~5Hz	
Accuracy rate	≥98%	
Divergence angle	1.2mrad	
Aperture diameter	27mm	
Communication interface	RS232	Optional: RS422
Input voltage	12V	
Power consumption	<3.5W	
Standby power	<0.35W	
Size	92mmx50mmx34mm	Subject to product manuals
Weight, all components	≤120g	Subject to product manuals
Heat dissipation method	Natural heat dissipation	

## DYA-02(C)



DYA-02(C) is highly compact, eye safe, easy to assemble and use. It uses the 1550nm laser from semiconductor laser diode as operating photosource. It has a long lifetime with low power consumption.

## Specifications:

Items	Technical parameters	Descriptions
Operating wavelength	1550nm	
Range	30m~5000m	See Note
Precision	±2m	Depend on Range
Frequency	1~5Hz	
Accuracy rate	≥98%	
Divergence angle	1.0mrad	
Aperture diameter	32mm	
Communication interface	RS232	Optional: RS422
Input voltage	12V	
Power consumption	<3.5W	
Standby power	<0.35W	
Size	99mm×62mm×45mm	Subject to product manuals
Weight, all components	≤170g	Subject to product manuals
Heat dissipation method	Natural heat dissipation	



## Small Laser Rangefinder Series C: DYC-01A



DYC-01A is highly compact, eye safe, easy to assemble and use. It uses the laser from solid-state laser as operating photosource. It has a long lifetime with low power consumption.

### Specifications:

Items	Technical parameters	Descriptions
Operating wavelength	1535nm	
Range	50m~8000m	See Note
Precision	±0.5m	Depend on Range
Frequency	1~5Hz	
Accuracy rate	≥99%	
Divergence angle	0.6mrad	
Aperture diameter	33mm	
Communication interface	RS422	
Input voltage	28V	Optional: 12V
Power consumption	≤4W	
Standby power	≤4W	
Size	86mmx51mmx40mm	Customizable
Weight, all components	≤200g	Customizable
Heat dissipation method	Natural heat dissipation	

## DYC-01B(1/2/3)



DYC-01B is highly compact, eye safe, easy to assemble and use. It uses the laser from solid-state laser as operating photosource. It has a long lifetime with low power consumption.

### Specifications:

Items	C-01B1 Technical parameters	C-01B2 Technical parameters	C-01B3 Technical parameters	Descriptions
Operating wavelength	1535nm	1535nm	1535nm	
Range	50m~10000m	50m~12000m	50m~14000m	See Note
Precision	±1m	±2m	±2m	Depend on Range



Frequency	1~5Hz	1~5Hz	1~5Hz	
Accuracy rate	≥99%	≥99%	≥99%	
Divergence angle	0.8mrad	0.9mrad	0.6mrad	
Aperture diameter	48mm	48mm	48mm	
Communication interface	RS422	RS422	RS422	
Input voltage	28V	28V	28V	Optional: 12V
Power consumption	≤4W	≤4.2W	≤5W	
Standby power	≤4W	≤4.2W	≤5W	
Size	108mmx69mmx56mm	108mmx69mmx56mm	108mmx69mmx56mm	Customizable
Weight, all components	≤300g	≤300g	≤300g	Customizable
Heat dissipation method	Natural heat dissipation	Natural heat dissipation	Natural heat dissipation	

## DYC-01C(1/2/3)



DYC-01C is highly compact, eye safe, easy to assemble and use. It uses the laser from solid-state laser as operating photosource. It has a long lifetime with low power consumption.

### Specifications:

Items	C-01C1 Technical parameters	C-01C2 Technical parameters	C-01C3 Technical parameters	Descriptions
Operating wavelength	1535nm	1535nm	1535nm	
Range	50m~11000m	50m~13000m	50m~15000m	See Note
Precision	±2m	±2m	±3m	Depend on Range
Frequency	1~5Hz	1~5Hz	1~5Hz	
Accuracy rate	≥99%	≥99%	≥99%	
Divergence angle	0.8mrad	0.9mrad	0.6mrad	
Aperture diameter	65mm	65mm	65mm	
Communication interface	RS422	RS422	RS422	
Input voltage	28V	28V	28V	Optional: 12V
Power consumption	≤4W	≤4.2W	≤5W	
Standby power	≤4W	≤4.2W	≤5W	
Size	120mmx83mmx75mm	120mmx83mmx75mm	120mmx83mmx75mm	Customizable
Weight, all components	≤450g	≤450g	≤450g	Customizable
Heat dissipation method	Natural heat dissipation	Natural heat dissipation	Natural heat dissipation	

#### Note:

1. The range can be affected by the atmospheric visibility, target's colour, size, surface shape, etc.
2. No warranty or representation regarding the products' specific application suitability and may make changes to the products described without notice.