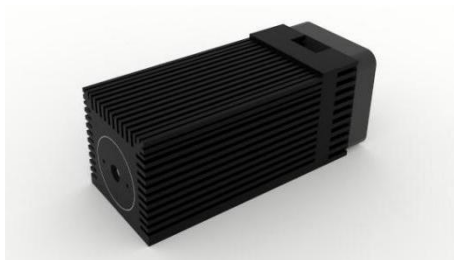




中国长春新产业光电技术有限公司  
Changchun New Industries Optoelectronics Tech. Co., Ltd

## PGL-V-H-1550



Diode infrared laser module at 1550nm is made features of ultra compact, long lifetime, low cost and easy operating, which made it be used widely in measurement, communication and spectrum analysis, etc.

### SYSTEM SPECIFICATIONS\*

Wavelength	nm	1550
Wavelength tolerance	nm	±10
Output power	mW	1-2000
Power stability(rms, over 4 hours)		<5%, <3%, <1%
Operating mode		CW
Transverse mode		Multimode
Beam diameter at the aperture(1/e <sup>2</sup> )	mm	~4×6
Beam divergence, full angle	mrad	<10
Warm-up time	minutes	<10
Beam height from base plate	mm	15
Expected lifetime	hours	10000
Warranty	years	1

### ELECTRICAL SPECIFICATIONS

Operating voltage(PSU-V-OEM)	100-240VAC
Operating voltage(PSU-I-OEM)	12VDC
Modulation optional	TTL30kHz and Analog 0-5V
Connection	9 pin connector

### ENVIRONMENTAL CONDITIONS

Operating temperature	-10°C to 50°C
Storage temperature	-20°C to 80°C
Humidity	< 90%, non-condensing

### MECHANICAL SPECIFICATIONS

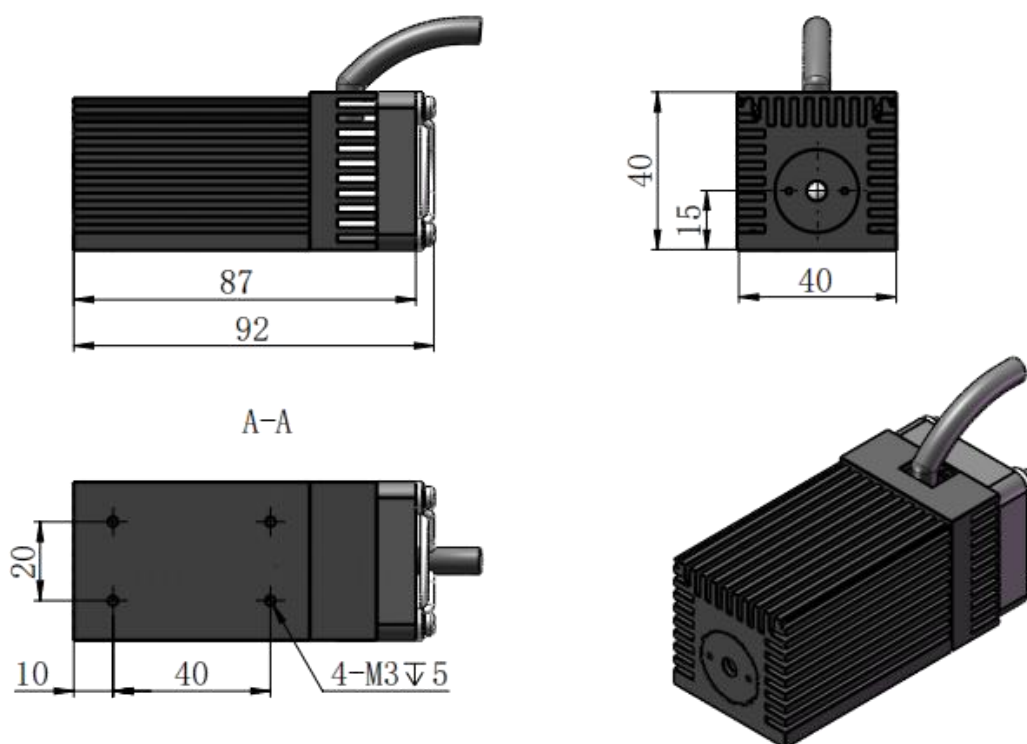
Dimensions of laser head	92(L)×40(W)×40(H)mm <sup>3</sup>
Material	Aluminum

\*All testing data under the conditions of temperature 25°C.

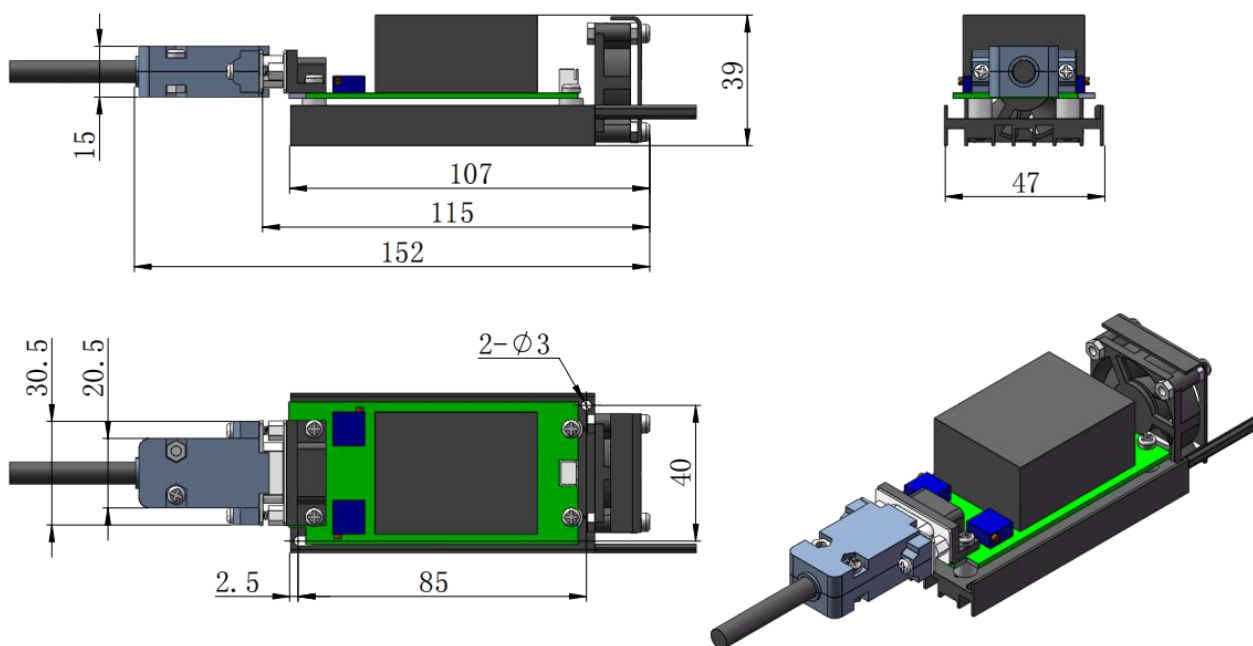


中国长春新产业光电技术有限公司  
Changchun New Industries Optoelectronics Tech. Co., Ltd

Dimensions of laser head(92×40×40mm<sup>3</sup>)



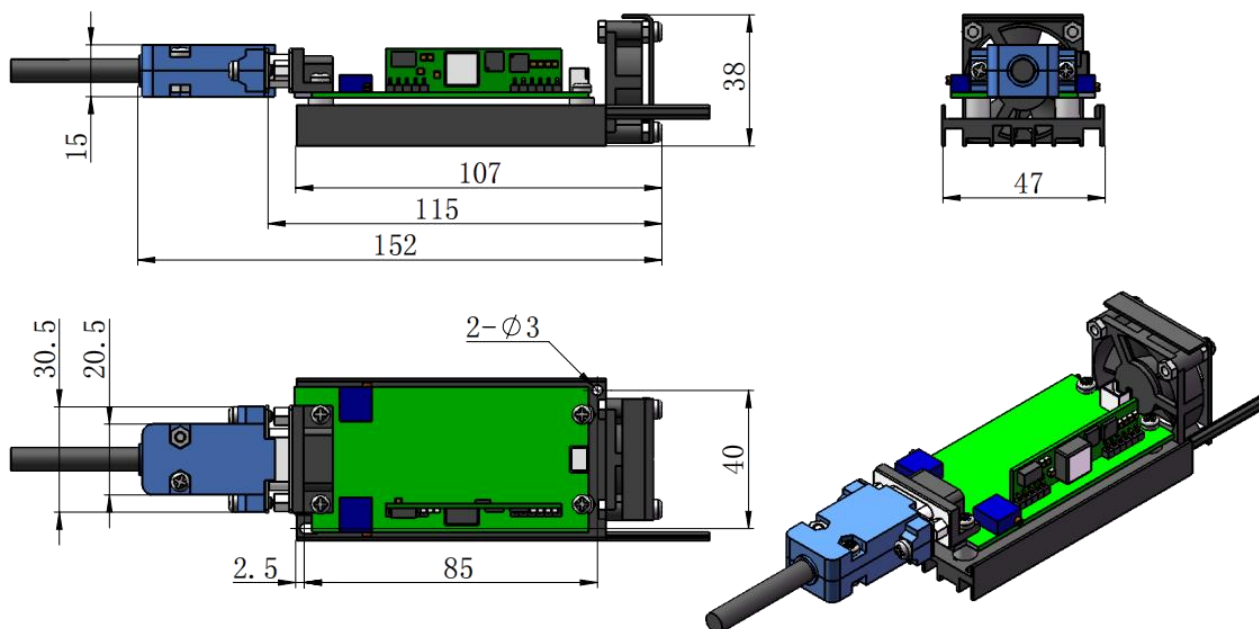
Dimensions of PSU-V-OEM power supply  
(107×47×39mm<sup>3</sup>, 100-240VAC, TTL 30kHz and Analog 0-5V)



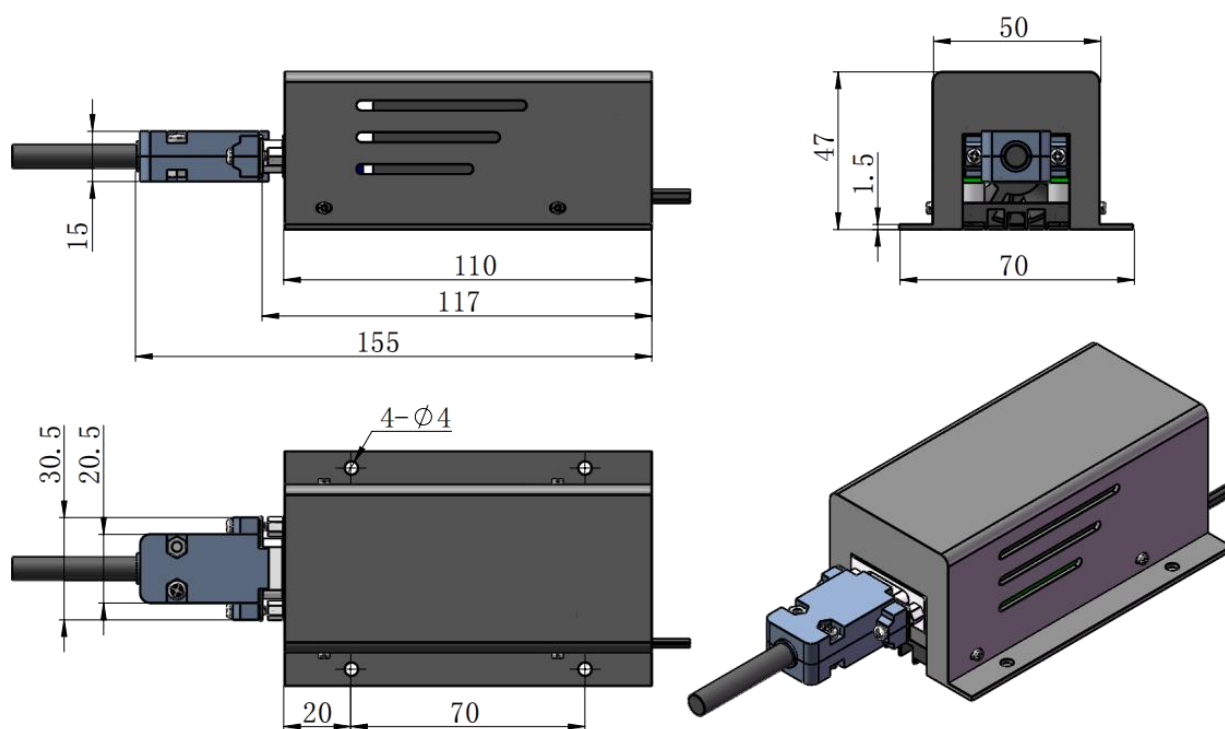


中国长春新产业光电技术有限公司  
Changchun New Industries Optoelectronics Tech. Co., Ltd

Dimensions of PSU-I-OEM power supply( $107 \times 47 \times 38 \text{mm}^3$ , 5/12VDC, TTL 30kHz and Analog 0-5V)



Dimensions of PSU-V-OEM and PSU-I-OEM power supply with dust cover( $110 \times 70 \times 47 \text{mm}^3$ )





中国长春新产业光电技术有限公司  
Changchun New Industries Optoelectronics Tech. Co., Ltd

Dimensions of PSU-V-OEM and PSU-I-OEM power supply with adjustable knob(110×70×84mm<sup>3</sup>)

