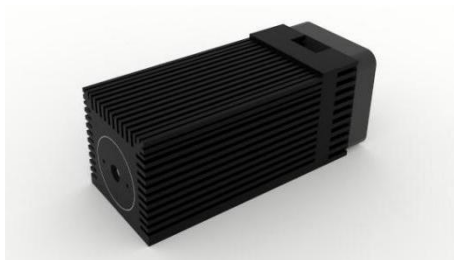




中国长春新产业光电技术有限公司  
Changchun New Industries Optoelectronics Tech. Co., Ltd

## PGL-V-H-690



Diode red laser module is made features of ultra compact, long lifetime, low cost and easy operating, which made it be used widely in laser pointing, laser show, etc.

### SYSTEM SPECIFICATIONS\*

Wavelength	nm	690
Wavelength tolerance	nm	±10
Output power	mW	1-1000
Power stability(rms, over 4 hours)		<5%, <3%, <1%
Operating mode		CW
Transverse mode		Multimode
Beam diameter at the aperture(1/e <sup>2</sup> )	mm	~4×6
Beam divergence, full angle	mrad	<6
Warm-up time	minutes	<10
Beam height from base plate	mm	15
Expected lifetime	hours	10000
Warranty	years	1

### ELECTRICAL SPECIFICATIONS

Operating voltage(PSU-V-OEM)	100-240VAC
Operating voltage(PSU-I-OEM)	12VDC
Modulation optional	TTL30kHz and Analog 0-5V
Connection	9 pin connector

### ENVIRONMENTAL CONDITIONS

Operating temperature	-10°C to 50°C
Storage temperature	-20°C to 80°C
Humidity	< 90%, non-condensing

### MECHANICAL SPECIFICATIONS

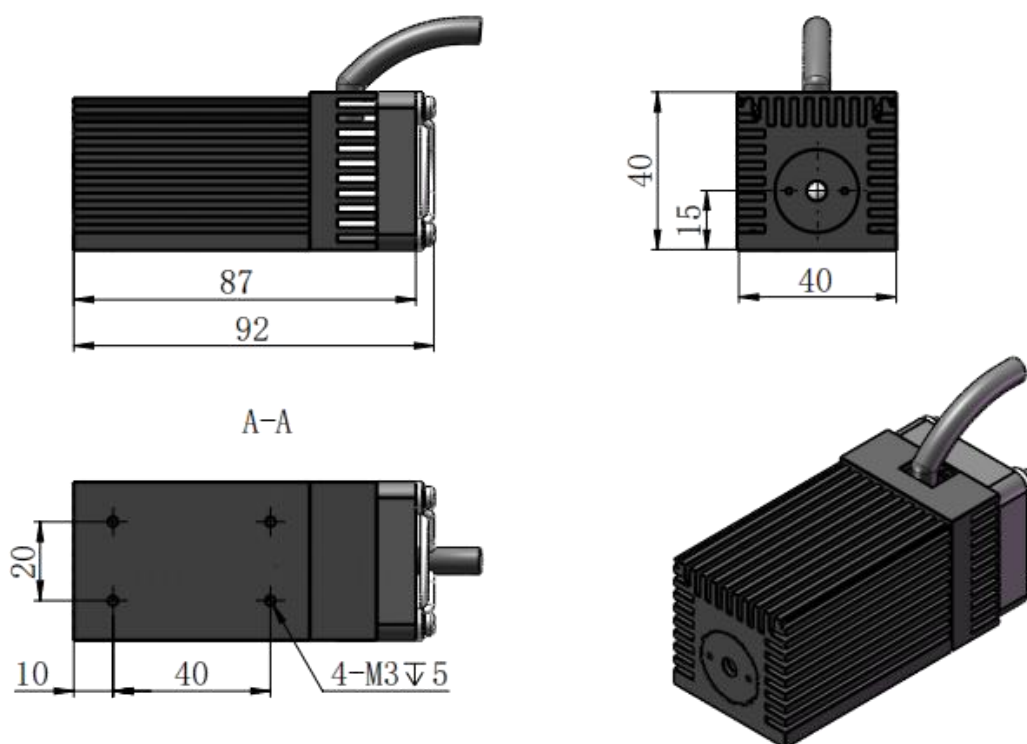
Dimensions of laser head	92(L)×40(W)×40(H)mm <sup>3</sup>
Material	Aluminum

\*All testing data under the conditions of temperature 25°C.

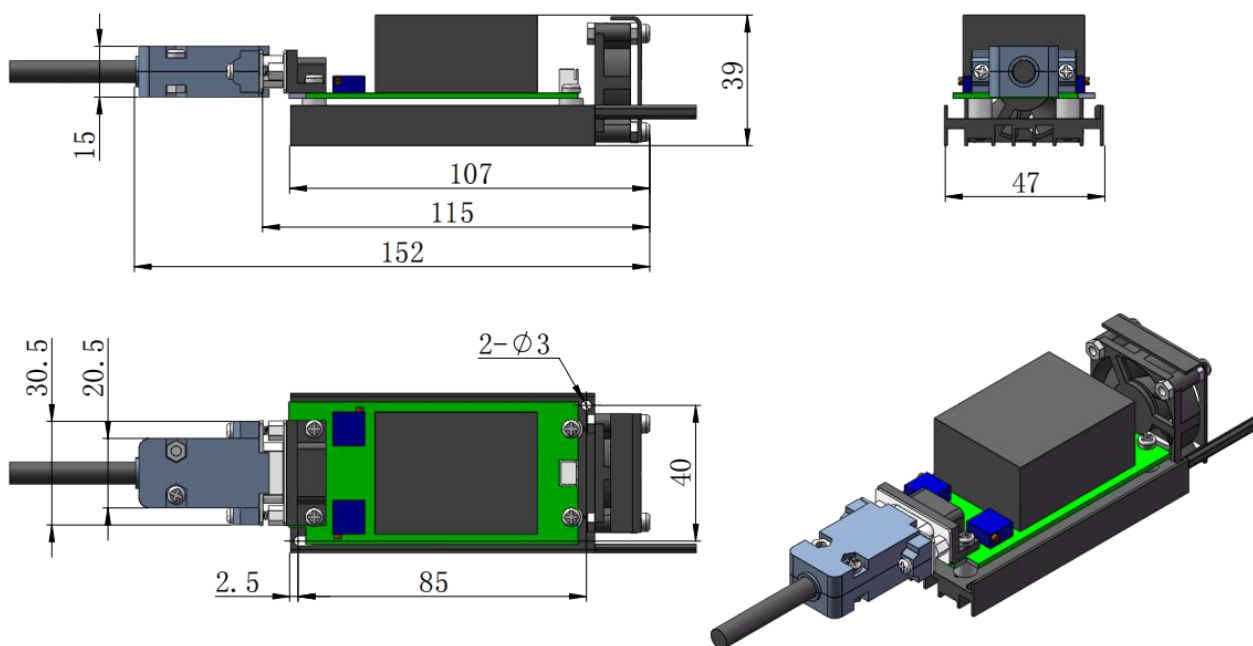


中国长春新产业光电技术有限公司  
Changchun New Industries Optoelectronics Tech. Co., Ltd

Dimensions of laser head(92×40×40mm<sup>3</sup>)



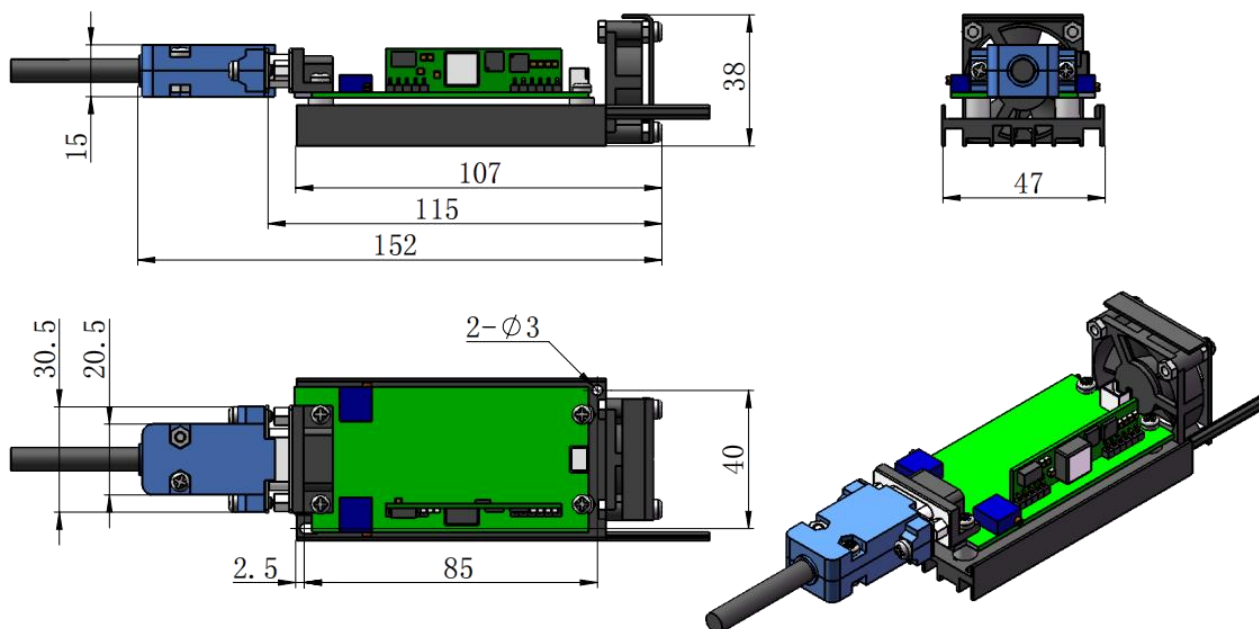
Dimensions of PSU-V-OEM power supply  
(107×47×39mm<sup>3</sup>, 100-240VAC, TTL 30kHz and Analog 0-5V)



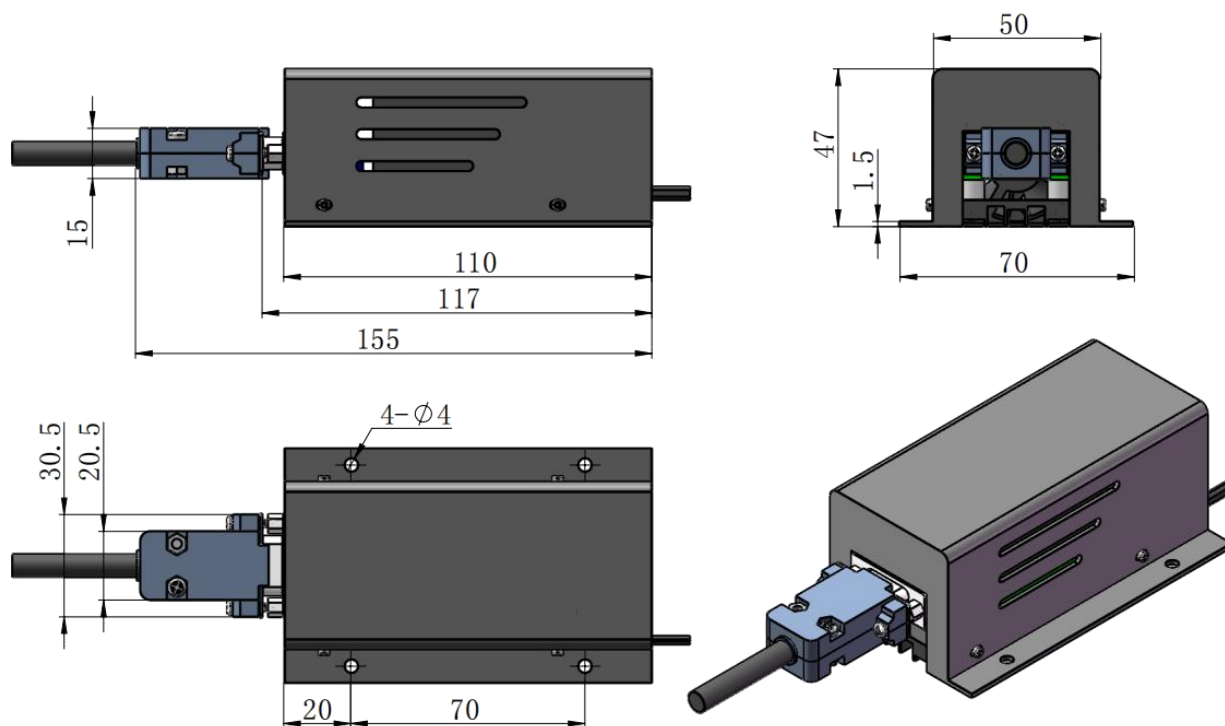


中国长春新产业光电技术有限公司  
Changchun New Industries Optoelectronics Tech. Co., Ltd

Dimensions of PSU-I-OEM power supply( $107 \times 47 \times 38 \text{mm}^3$ , 5/12VDC, TTL 30kHz and Analog 0-5V)



Dimensions of PSU-V-OEM and PSU-I-OEM power supply with dust cover( $110 \times 70 \times 47 \text{mm}^3$ )





中国长春新产业光电技术有限公司  
Changchun New Industries Optoelectronics Tech. Co., Ltd

Dimensions of PSU-V-OEM and PSU-I-OEM power supply with adjustable knob(110×70×84mm<sup>3</sup>)

